



Instructions for using your Goblin Teasmade.

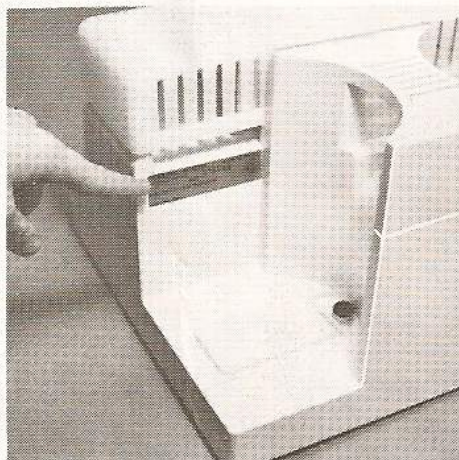
MODEL 860

Please retain for future reference

Please read these instructions carefully. They have been prepared to help you to obtain the best results from your Goblin TEASMADE. During maintenance always remove plug from supply socket.

This appliance complies with the limits for Radio Interference specified in BS 800.

Connecting your Teasmade to the supply



Check that the supply voltage details given on the rating plate are in accordance with your electricity supply.

IMPORTANT

The wires in this mains lead are coloured in accordance with the following code:-

Green and Yellow — **Earth** Blue — **Neutral** Brown — **Live**

As the colours of the wires in the mains lead of this appliance may not correspond with the markings identifying the terminals in your plug, proceed as follows:-

The wire which is coloured green and yellow must be connected to the terminal which is marked with the letter 'E' or by the earth symbol \perp or coloured green or green and yellow.

The wire that is coloured blue must be connected to the terminal which is marked with the letter 'N' or coloured black.

The wire which is coloured brown must be connected to the terminal which is marked with the letter 'L' or coloured red.

WARNING: THIS APPLIANCE MUST BE EARTHED

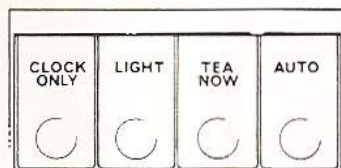
Each wire must be properly connected to the appropriate terminal pin of a suitable three-pin plug and the outer sheath of the mains lead securely retained by the anchorage arrangement of the plug. In case of doubt have this undertaken by a qualified electrician as Goblin (BVC) Limited do not regard the repair of faults on a mains plug connection as part of the guarantee offered on this product.

If a 13A fused plug is used it is recommended that a 3 amp cartridge fuse be fitted.

How to use your Teasmade

THE KEYBOARD SWITCH

The keys of the switch are marked



Pressing down 'AUTO' key, programmes your 'TEASMADE' to automatically make tea/coffee, switch on light and sound buzzer at the alarm set time, if the instructions in this booklet are followed correctly.

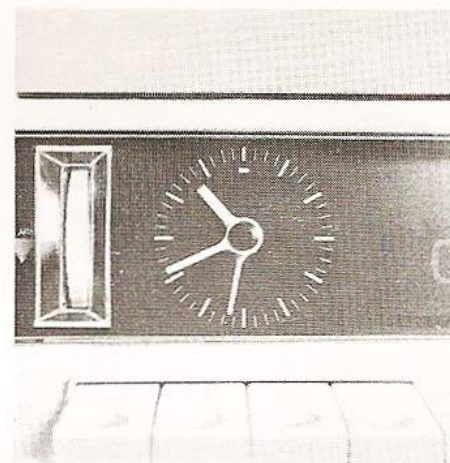
Pressing down 'TEA NOW' key, switches on kettle and light and tea/coffee will be ready in about 12 minutes, if the instructions in this booklet are followed correctly.

Pressing down 'LIGHT' key, switches on light.

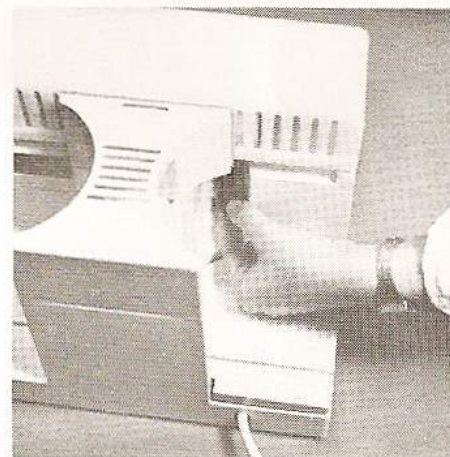
Pressing down 'CLOCK ONLY' key, cancels the operation selected by any of the other keys leaving the clock running. This key resets when you lift your finger.

The Clock

The clock starts immediately you plug the appliance into a supply socket. To enable you to check, an indicator below 12 o'clock mark on the clock dial should rotate.



To adjust the clock to the correct time: Rotate the hand set knob in an anticlockwise direction.

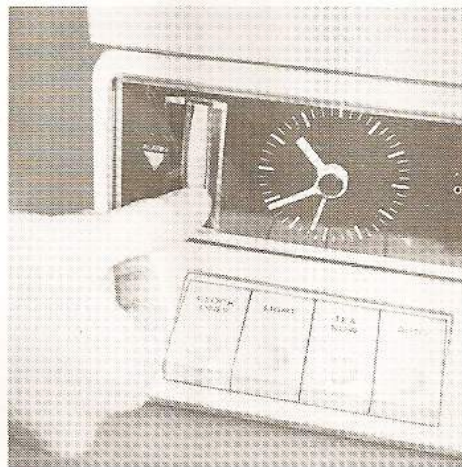


The Alarm

Push thumbwheel downwards until alarm hand points to time at which tea/coffee is required.

Note: 1) Your 'TEASMADE' has a 12 hour clock movement, this means that although you can prepare it to make tea/coffee ie you can fill kettle with water etc. at anytime, it cannot automatically make tea/coffee 12 hours or more after the time at which you programmed it, ie pressed down 'AUTO' key of switch. 2) The thumbwheel alarm set can only be moved in one direction this is to ensure accurate setting of the alarm.

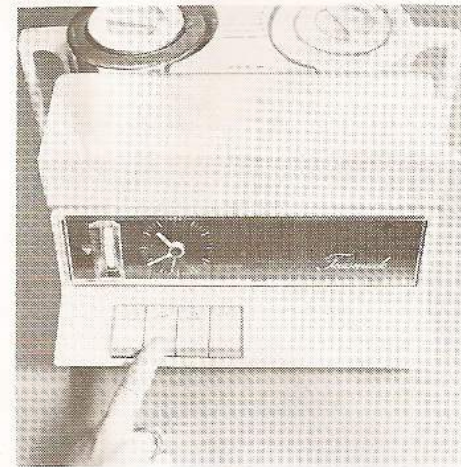
To use the 'TEASMADE' as an alarm clock only: Place the teapot in position and press down 'AUTO' key of switch. The buzzer will sound approximately 12 minutes before the time set and this should be taken into account when setting the alarm. The kettle should be left in position, but must **not** be filled.



The Light

The 'TEASMADE' light can be switched on at any time by pressing down LIGHT key of switch.

To switch off press down 'CLOCK ONLY' key or if you have already prepared your 'TEASMADE' to make tea/coffee at a set hour press down 'AUTO' key. Assuming this is within 12 hours of the alarm set time.



Making Tea or Coffee

Remove kettle lid by rotating anticlockwise and fill kettle with water to level mark.

DO NOT OVERFILL, boiling water may be ejected through vent hole above spout if overfilled.



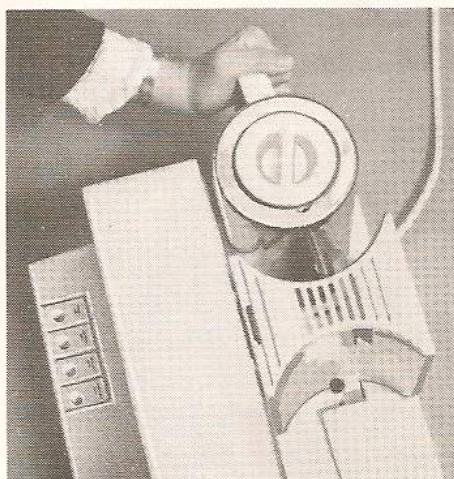
Place lid in position and rotate clockwise to seal ensuring that lid engages correctly with kettle. When tightened lid should be level and protrude evenly above kettle body. If kettle lid is not fitted correctly seal may not be good enough for water transfer to take place and your 'TEASMADE' will not make tea/coffee nor will it provide an alarm.



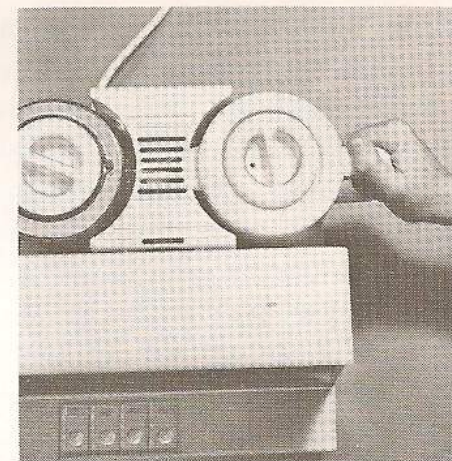
Place kettle on platform and slide towards centre pillar to engage with connector.

WARNING – DO NOT CONNECT KETTLE DIRECT TO ELECTRICITY SUPPLY.

We suggest that you operate your 'TEASMADE' using the 'TEA NOW' key once or twice with only water in the kettle before making tea/coffee.



Put tea/coffee in teapot and replace lid. Place teapot in alcove so that it rests against central pillar. Note: If teapot is not in correct position, buzzer will sound when 'AUTO' or 'TEA NOW' switch key is depressed.



Press down 'AUTO' key of switch. Your 'TEASMADE' will automatically make your tea/coffee, switch on the light and wake you at the alarm set time. To silence buzzer press down 'LIGHT' or 'CLOCK ONLY' switch key, as required. Allow tea/coffee a minute or so to brew before pouring for best results. The loudness of the buzzer can be adjusted to your requirements, please refer to the buzzer section in this booklet for details. Tea can be made at any time by pressing down 'TEA NOW' switch key; this switches on the heating element and light and enables a pot of tea/coffee to be ready for serving in about 12 minutes.

After your tea/coffee has been consumed, the teapot requires washing out.

Important Points to note

- 1) The 'TEASMADE' clock has a 12 hour movement.
- 2) Check regularly that movement of kettle and moving platform is not restricted.
- 3) Remove kettle from 'TEASMADE' when filling with water and replace and tighten lid to seal after filling.
- 4) If liquids are accidentally spilt on or adjacent to 'TEASMADE', remove plug from supply socket and wipe dry with cloth.
- 5) The 'TEASMADE' is designed to transfer sufficient water from kettle to teapot to make 4 cups of tea/coffee. The kettle will still contain water usually to just above the level of the element.
- 6) Pressing down a switch key when one of the other switch keys is already depressed may **momentarily** sound the buzzer. This effect may be safely disregarded. Continuous sound from the buzzer however is a warning that the TEASMADE has not been correctly prepared or that the alarm set time is reached.

The Buzzer

To adjust buzzer loudness:
Remove lampshade by inserting knife blade or similar thin object through slot in moulding to release catch. Remove teapot from platform and press down 'TEA NOW' key so that buzzer sounds.

Rotate adjustment knob:
Clockwise i.e. direction marked — to reduce loudness, anticlockwise i.e. direction marked + to increase loudness.

When adjusted to your satisfaction refit lampshade by locating slots in rear of lampshade over the projections in the body behind lampholder. It should NOT be necessary to adjust setting again.



Care and maintenance of your Teasmade

Before carrying out any maintenance operation disconnect from the mains supply.

Your 'TEASMADE' is manufactured from high-quality materials and should require little maintenance.

Occasionally however to keep your 'TEASMADE' looking bright and new, wipe over with a slightly damp cloth. Do not use cleaning fluids or detergents. The stainless steel kettle may be polished using a clean soft dry cloth.

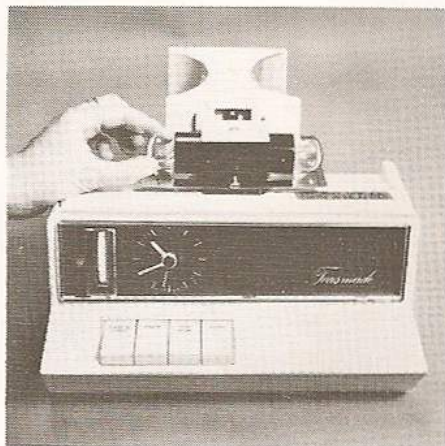
If 'TEASMADE' light fails, the lamps probably need replacement, remove lampshade (see The Buzzer — instructions for guidance) to gain access to them.

Note: The 'TEASMADE' uses two 15 watt BC pygmy lamps. Do not replace with larger lamps or lamps of higher wattage.

Disengage lamp with anti-clockwise twist and fit suitable replacement (right).

Refit lamp cover by locating the two slots at the rear over the projections on the central pillar and lower until the catch locks the cover in position.

To maintain your kettle in efficient working order occasional de-furring may be required particularly if you live in a hard water area. De-furring



agents can be obtained from hardware stores and chemists and should be applied in accordance with the manufacturers instructions. If kettle spout is allowed to fur up, boiling water may be ejected through vent hole in kettle body.

Should your 'TEASMADE' require servicing, contact your nearest Goblin Service Depot to obtain information regarding servicing. Be sure to quote model number and serial number which are detailed on the rating label (situated in teapot alcove). When returning your 'TEASMADE' for service ensure that it is well packed and therefore unlikely to be damaged in transit. We suggest that the polystyrene pack in which your 'TEASMADE' is supplied be retained as it is ideal for returning the appliance for service, should it be required.

Your Goblin Service Depots

LEATHERHEAD, Surrey
Goblin Works, Ermyn Way
Leatherhead KT22 8TZ
Telephone Ashted 76121

BELFAST, NI
399-401 Castlereagh Road
Belfast BT5 0ND
Telephone 0232 56294

BIRMINGHAM
PO Box 184, Albion Works
Albion Street
Birmingham B1 3DL
Telephone 021 236 8292

KEIGHLEY
PO Box 12, Newton House
Cavendish Street, Keighley
West Yorkshire BD21 3RR
Telephone 0535 607681

In accordance with the Company's policy of continued development and improvement we reserve the right to modify the design without prior notice.

'TEASMADE' is a registered trade mark and the design embodies various patents.



GOBLIN (BVC) LIMITED A MEMBER OF THE BSR GROUP
LEATHERHEAD, SURREY. KT22 8TZ
Telephone Ashted 76121
Telex 28134



Printed in England August 1981

01-63620-00

